

Brief introduction

Flytec AG
Electronic flight instruments
Ebhenastrasse 18, CH-6048 Horw
Switzerland
fon +41 41 349 18 88
fax +41 41 349 18 99
www.flytec.ch
info@flytec.ch

Installation:

Insert the CD. If no window opens, please open the CD-directory. The installation file is by default D:\FLYCHART 4.32\Flytec Full\.

Start the installation by double-clicking on fc432-26_1.exe. The assistant will lead you through the installation.

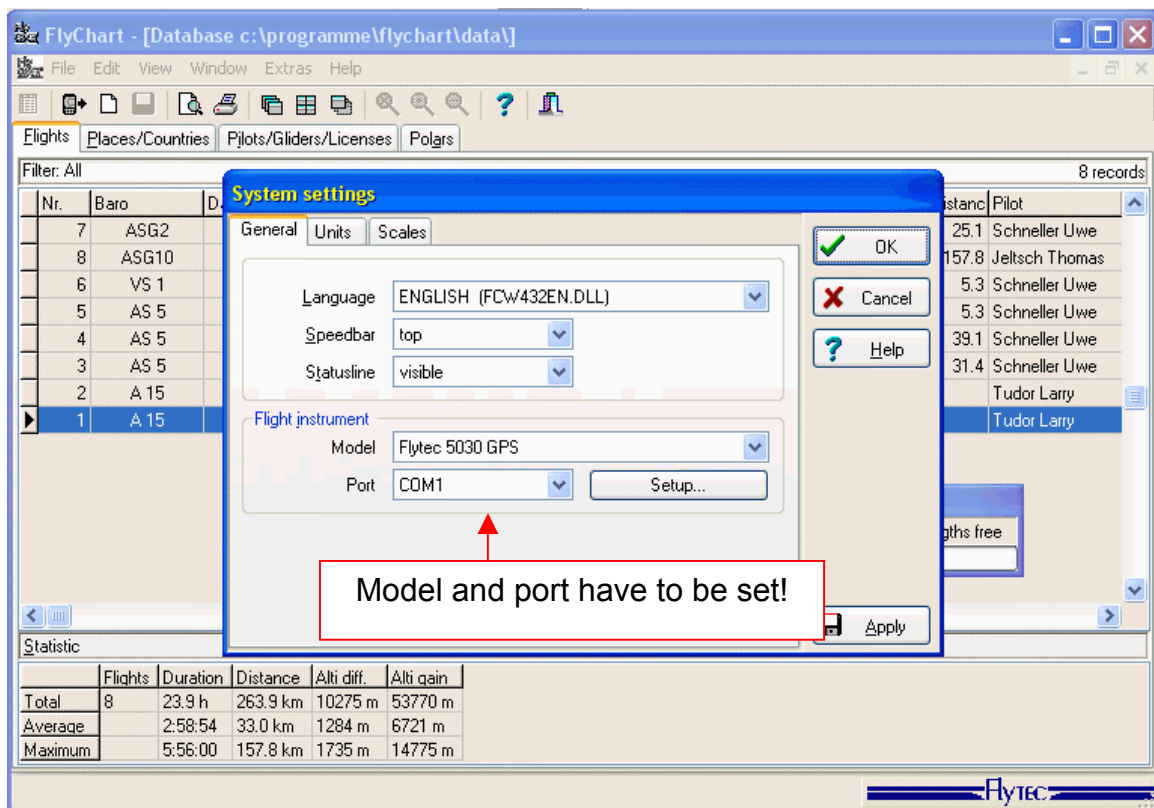
If an error message appears, delete the Fcw432.exe in the FlyChart-Sys-Folder (by default C:\Programme\FlyChart\Sys). Confirm the deletion with yes.

System settings:

Start the program. At Extras → System setting you can change the settings. For best results leave the scales on automatics.

If you changed the language, close FlyChart and restart it for the change to apply.

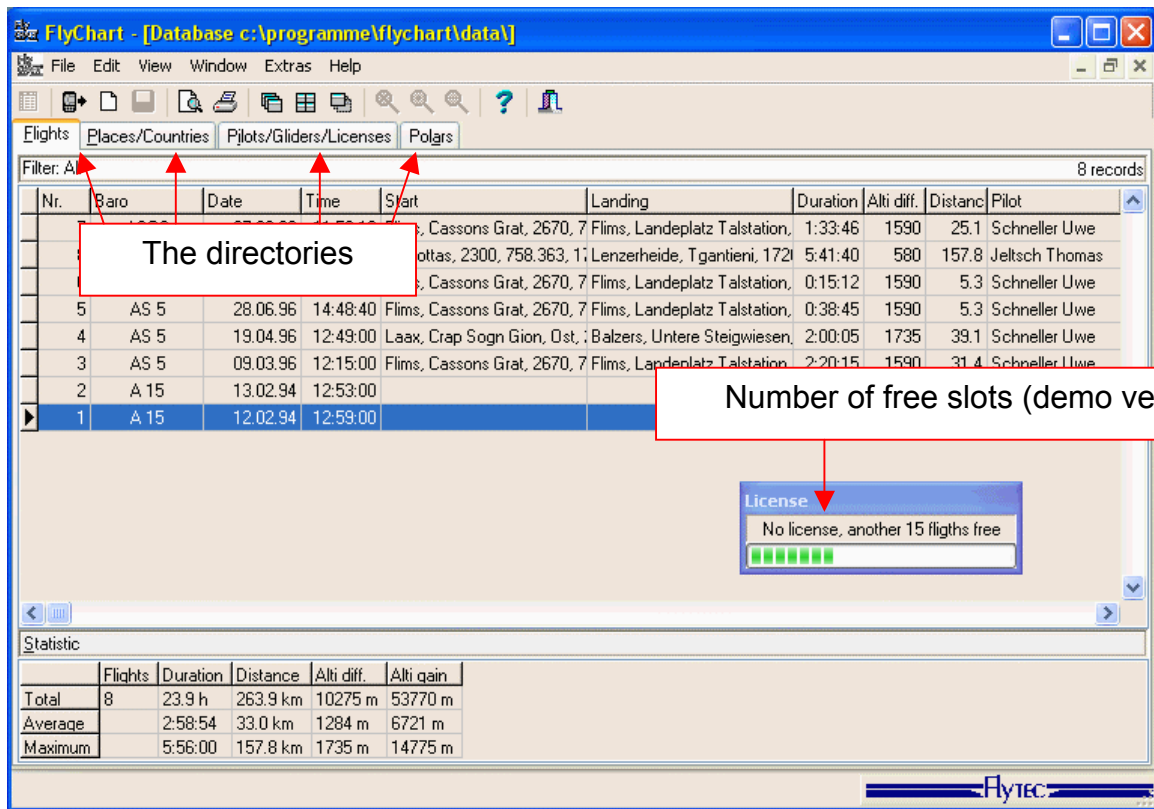
Do not forget to set the flight instrument model and com port . Otherwise there will be no communication with the instrument.



System setting window

First steps:

The starting screen shows the database directory. There are four directories: Flights, Places/Countries, Pilots/Gliders/Licences and Polars.



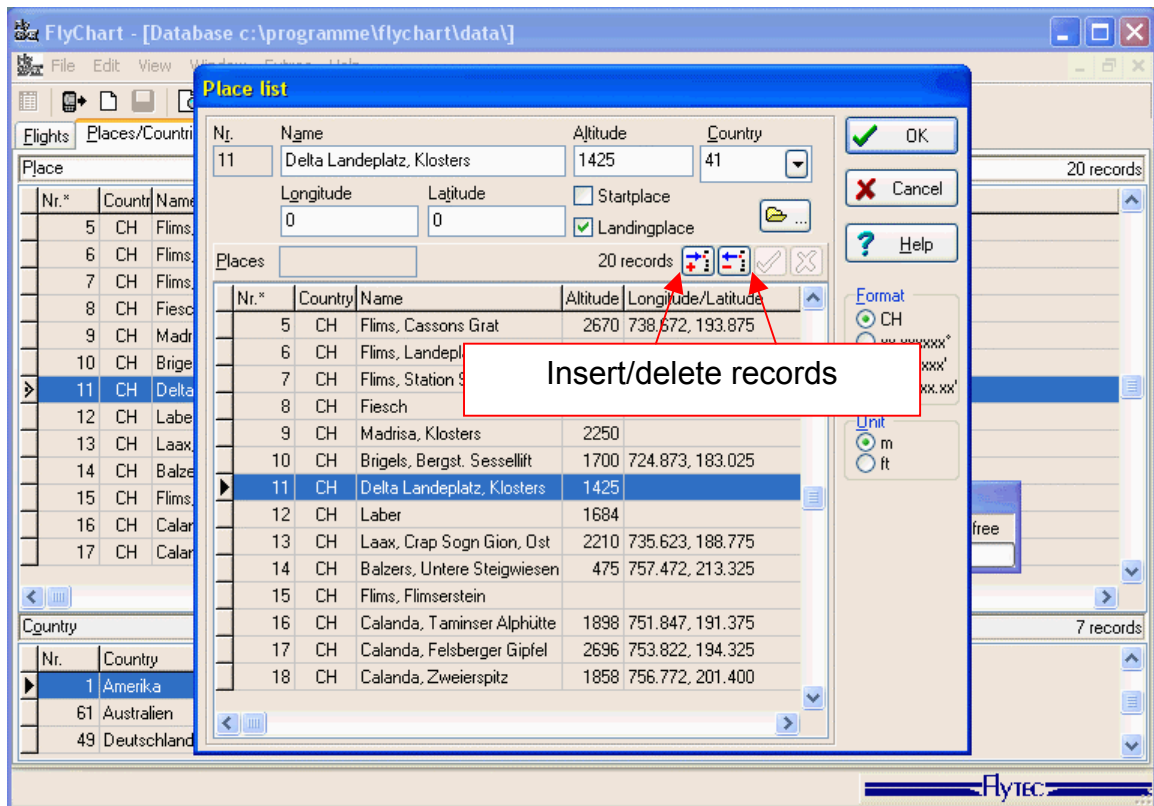
Starting window

The directories display the saved records.

The License directory refers to the FlyChart software license.

There are two license types. Without a license FlyChart is a demo version with only 15 flights. With the standard license you have no maximum number of saved flights and with the professional license it is possible to use the polars and import/export functions in addition to the standard features.

To enter a new record to the directory double-click into the directory. A new window appears where you can create, delete, or edit a record.



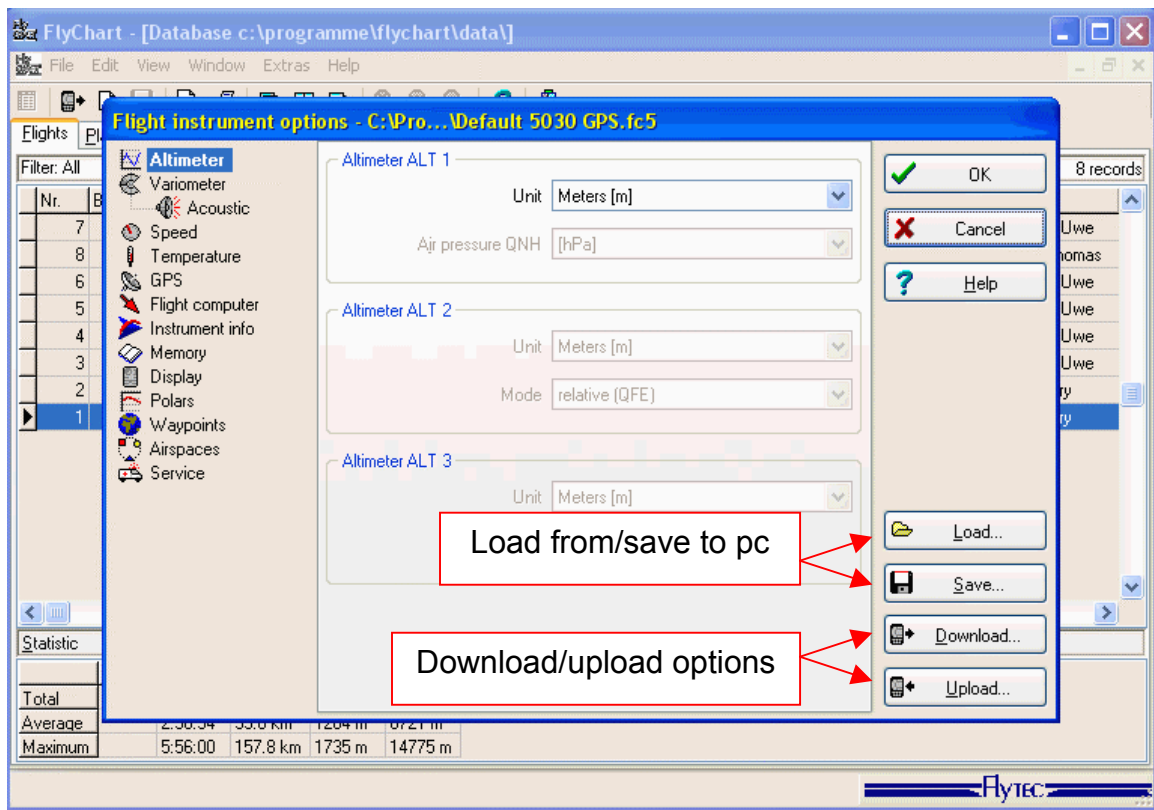
New place window

If you double-click onto a flight the flight detail window will appear. In that window you can also see a graphical display of the flight.

The directories can be sorted. At View → Sorting you can choose how to sort it and which details you want to be displayed

Instrument setting:

At Extras → Flight instrument settings the options can be set. it is possible to download a setting from an instrument and save it on a pc. Edited settings will be highlighted pink.



Instrument options window

To add new waypoints to the instrument click onto waypoints.

You can upload already set waypoints and routes or create new ones by right clicking into the waypoints field or clicking onto the create button.

The waypoint data format is:

`<NAME>, <LONGITUDE>[+-DDD.DDDDDD], <LATITUDE>[+-DD.DDDDDD], <ALTITUDE>[m]`

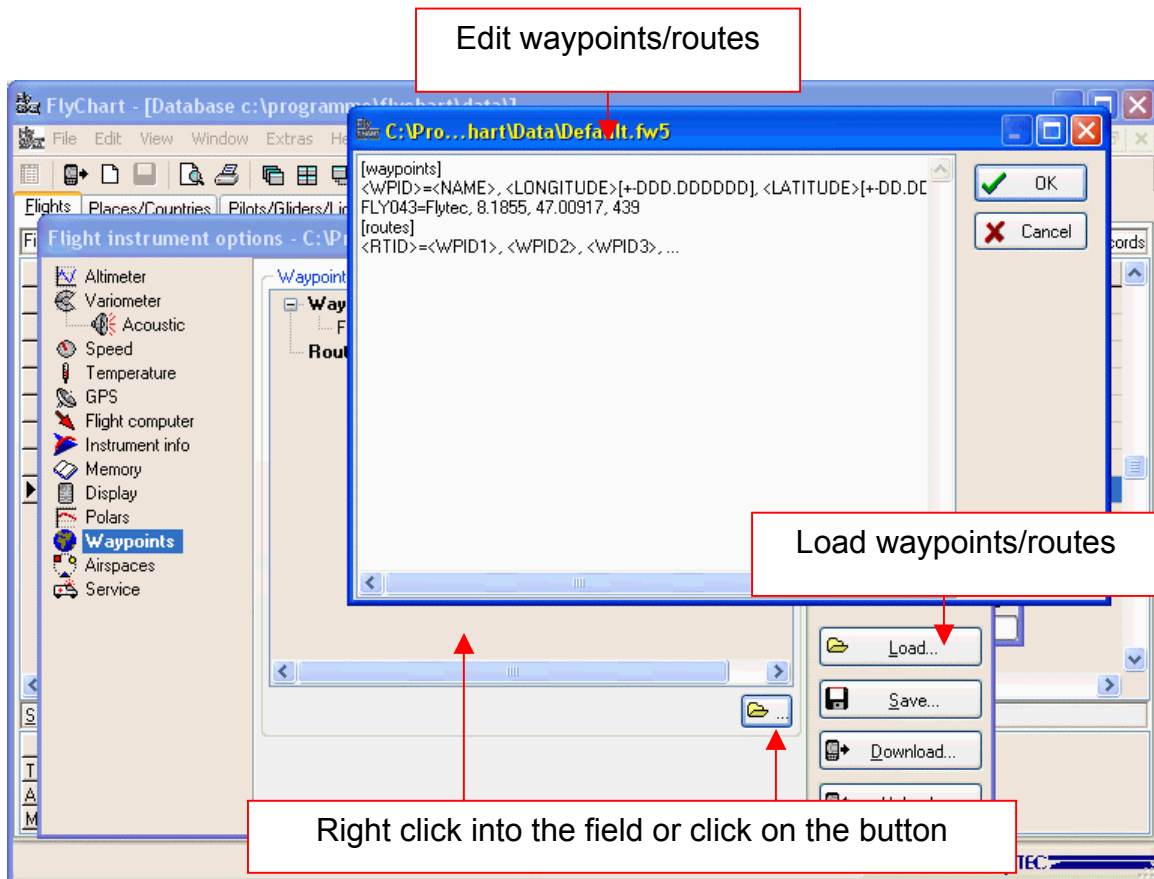
the WayPointID (<WPID>) will be set automatically

The route data format is:

`<RTID>=<WPID1>, <WPID2>, <WPID3>, ...`

The RouteID (<RTID>) will be set automatically

To create a route out of new waypoints close the window and reopen it. This allows the computer to set the WayPointIDs.



Waypoint/route window

For more help use the help at Help → Help (F1), Help → Program Description or use the context help at Help → Contents or click onto the question mark in the speed bar.